

# STUA

## NUBE ARMCHAIR TECHNICAL DETAILS



### DESIGN

Nube is a cosy upholstered armchair that blends well with architecture.

The upper surface is flat and firm. It can be used for a laptop or you can even sit on it.

### DISEÑO

*Nube es una acogedora butaca tapizada que se integra con la arquitectura.*

*La zona plana superior es firme. Sirve para apoyar un ordenador, un libro, o incluso para tomar asiento.*



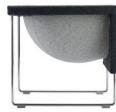
### SQUARE

The shape of the armchair seen from above is square. The armchairs can also be joined together, which allows for numerous combinations.

### CUADRADA

*La planta de la butaca es cuadrada vista de arriba.*

*Además las butacas se pueden unir para crear innumerables configuraciones.*



### BACK

The back part of the armchair has been emptied, revealing the bubble shaped seat.

The wide space between legs makes cleaning easy.

### TRASERA

*La parte trasera de Nube ha sido vaciada, revelando la forma de burbuja del asiento.*

*El amplio espacio entre patas facilita la limpieza.*



### UPHOLSTERY

The design of Nube makes it possible to upholster with one colour only or combining two.

The upholstery is fixed. Only the seat cushion-cover is removable.

The foams are fire retardant.

### TAPICERÍA

*El diseño de la butaca Nube permite gran variedad de tapizados, tanto en un solo color como combinándolos.*

*La tapicería de la butaca es fija. Solamente el cojín del asiento es desenfundable.*



### FRAME: CHROME OR BLACK

Shiny chromed legs: include grey removable glides.

Black legs: include black removable glides (with optional felt cover included)

Grey and black glides cannot be exchanged.

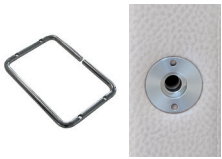
### PATAS: CROMO O NEGRAS

*Estructura cromada: incluye tacos grises.*

*Estructura negra: incluye tacos negros (con protector de fieltro opcional incluido)*

*Los tacos grises y negros no se pueden intercambiar.*

## NUBE SYSTEM FOR WAITING AREAS: ONLY CHROME FINISH / SISTEMA NUBE PARA ZONAS DE ESPERA: SÓLO ACABADO CROMO



The armchairs can be joined together with a metal part.

Every armchair to be joined requires metal inserts under the arms. Please indicate in your order.

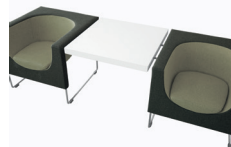
*Las butacas se pueden unir mediante una pieza metálica.*

*Cada butaca que se va a unir requiere insertos metálicos bajo los brazos. Por favor, indíquelo en su pedido.*



Nube system includes a side table collection that can be joined to the arm of the chair. This table is the same size as the armchair and is always white.

*El sistema Nube incluye una colección de mesas que pueden ser unidas a las butacas. Tienen las mismas dimensiones que la butaca y son siempre de color blanco.*



The square table can also be suspended between two armchairs.

The armchairs must be equipped with the metal inserts in the arms.

*La mesa Nube también puede ir suspendida entre dos butacas.*

*Es necesario que las butacas tengan los insertos.*



There is a corner tabletop, of a larger size, which makes it possible to position the armchairs at an angle.

*Existe una versión esquinera de la mesa, de mayor tamaño, para colocar las butacas en ángulo.*



The table for the Nube armchair can be ordered as a stand-alone table.

*La mesa de la butaca Nube está disponible individualmente.*

### FRAME ESTRUCTURA



Shiny chromed steel  
Acero cromado brillo



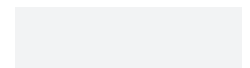
Black  
Negra

### UPHOLSTERIES TAPIZADOS

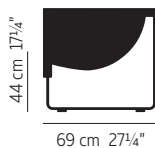
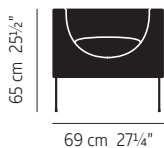


[stua.com/design/nube](http://stua.com/design/nube)  
[stua.com/es/design/nube](http://stua.com/es/design/nube)

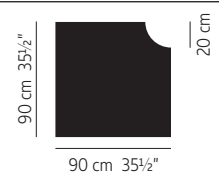
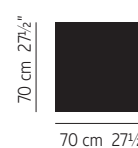
### TABLETOP MESA



White lacquered  
Blanco lacado



Weight / Peso: 18 Kg



IN-STOCK Nube: [www.stua.com/in-stock](http://www.stua.com/in-stock)

## SUSTAINABLE DESIGNS

Within STUA's strategy, both, the quality of products and the preservation of the environment in our production processes, are a priority.

Over the years STUA has been implicated to the search for environmentally friendly raw materials, processes, products and packaging.

Among many others, we can highlight the following characteristics and actions:

- To design long lasting and good quality products.
- To reduce the consumption of raw materials.
- To use recycling materials.
- To use production systems which are environmentally friendly.

The achievement of these aims will contribute to a real sustainable development.

Our products hold the main European certificates and comply with demanding German standards as regards product resistance and ergonomics. At STUA we also care for people's health.

## ENVIRONMENTALLY FRIENDLY PACKAGING

- In the pursuit of an environmentally friendly packing, STUA is removing all the plastic from this process.
- All STUA cardboard packaging is made with recycled materials and is 100% recyclable because no staples are used in the production.
- Our remaining packaging plastics contain no halogen.

## LOGISTICS MINIMIZING CARBON FOOTPRINT

- STUA choose the eco-friendliest transportation method available.
- We select logistic partners who use environmentally-friendly technologies for their vehicles/engines and are located close to the factory where our products are manufactured in order to reduce the emission release.
- Load Optimization. We try to send a truck only when it is fully loaded.
- Route Optimization. By choosing the best route, it is possible to save fuel and, consequently, reduce the amount of CO<sub>2</sub> emissions.

## RESPONSIBLE MANUFACTURING

- This product is totally manufactured in the European Union.
- The STUA designs are created for a long duration. This helps to make a friendly use of the natural resources. We offer a 2-year guarantee on all the STUA products. STUA guarantees a period of availability of spare parts of 10 years for any product.
- The wood used to manufacture our designs comes from sustainably managed forests registered with the PEFC (Programme for the Endorsement of Forest Certification).
- The MDF material and glues used in the production are formaldehyde free. STUA products use materials that comply with M1 and the California Air Resources Board ACTM 93120.2.
- STUA's fabrics comply with the strict ISO 14001 international environmental regulations regarding its products and its manufacturing processes.
- STUA's upholstery is fire-resistant but avoids the use of harmful retardants like PBB and PBDE.
- The foams used by STUA complies the most exhaustive ecological textile certificate: the OEKO-TEX STANDARD 100. The analyses include prohibited and regulated substances, chemicals considered dangerous to health, and preventive parameters.
- The treatment of metal parts for their subsequent painting, with powder paint or chromed, is the one corresponding to a degreasing and phosphating of the same. No aromatic solvents are used and no diffuse emissions of volatile organic compounds are generated.
- STUA's chrome plating process uses a trivalent chromium bath to replace the highly-toxic hexavalent chromium bath. The trivalent chromium process must produce hard chrome components that perform as well as or better than the older process. Other additional advantages involved in this process:
  - It is not necessary to reduce hexavalent chromium in wastewater.
  - It makes it easier to handle and use the product.
  - No gas emissions are produced.
- The recyclability of the metallic materials used by STUA reaches 97%.
- Our plastic elements are excluded from heavy metals and phthalats in their manufacture, as well as halogenated plastics such as PVC.
- STUA promotes processes with low water consumption. In the last 5 years, we have achieved a 31% saving in drinking water consumption by implementing saving processes.



USE OF WOOD FROM SUSTAINABLY MANAGED FORESTS



ECOLOGICAL UPHOLSTERY WITHOUT PBB & PBDE



FOAMS FIRE RETARDANT & FREE OF TOXIC SUBSTANCES



FORMALDEHYDE FREE PRODUCTS



HEXAVALENT CHROMIUM-FREE FINISHES



PROCESSES WITH LOW WATER CONSUMPTION



RECYCLABLE MATERIALS AND PACKAGING



CERTIFICATED FOR POSTURAL HEALTH