

# STUA

## MAREA TABLE TECHNICAL DETAILS



### DESIGN

Marea is a very light-looking table with a slimline central column.

### HEIGHTS

Marea is available in three heights, and can be used as:

- a coffee table, 40 cm
- a side table, 55 cm
- a dining table, 73 cm



### BASE

The star-shaped base, made of injected aluminium, gives the table stability, even with Ø80 cm tabletops.



### VENEER TOPS

The veneer tabletops are made of 19mm MDF with:

- white lacquered laminate
- oak alpi veneer
- walnut veneer
- black stained ash

The surface is protected with an acrylic cover to make the tabletop more durable. The MDF is formaldehyde free. The tops have a rounded bevelled edge, giving them a light appearance.



### HPL TOP

The tabletop can be made of high resistance HPL of 12 mm thick. Specially indicated for strong use. Finish: white laminate with black core. Edge: HPL requires a flat edge for a strong performance of the top.



### SQUARE

There is the option of a square top and the largest size is 70 x 70 cm.

### DISEÑO

Marea es una mesa de pie central con un diseño muy ligero.

### ALTURAS

Disponible en tres alturas, la mesa Marea se puede utilizar como:

- mesa de centro, 40 cm
- mesa auxiliar, 55 cm
- mesa de comedor, 73 cm

### BASE

Su base de inyección de aluminio con forma de estrella le da una gran estabilidad, incluso con tapas de Ø80 cm.

### TAPAS RECHAPADAS

Las tapas son de MDF de 19 mm grosor con:

- laminado blanco y lacado
- chapa de roble natural
- chapa de nogal natural
- chapa fresno teñido negro

La superficie se protege con una capa acrílica para una gran durabilidad. El MDF de STUA es libre de formaldehídos. Su borde biselado aporta una sensación de ligereza.

### TAPAS DE HPL

Las tapas pueden ser de HPL de 12 mm de espesor. Estas tapas son especialmente indicadas para uso intenso. Acabado: laminado blanco con alma negra. Borde: el HPL tiene el borde plano para una mayor durabilidad de la tapa.

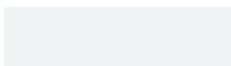
### CUADRADA

Existe la opción de tapa cuadrada con un tamaño máximo de 70 x 70 cm.

### FRAME ESTRUCTURA



Shiny chromed  
Cromada brillo

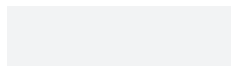


White  
Blanco



Black  
Negro

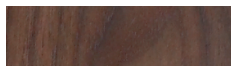
### TABLETOPS TAPAS



White lacquered, 20 mm  
Lacado blanco, 20 mm



Oak Alpi, 20 mm  
Roble Alpi, 20 mm



Walnut, 20 mm  
Nogal, 20 mm



Black stained ash, 20 mm  
Fresno teñido negro, 20 mm



White HPL with black core, 12 mm  
HPL blanco, canto negro, 12 mm

### Top Ø60 cm 23½"



### Top Ø70 cm 27½" / Top 70 x 70 cm 27½" x 27½"



### Top Ø80 cm 31½"



IN-STOCK Marea: [www.stua.com/in-stock](http://www.stua.com/in-stock)

## SUSTAINABLE DESIGNS

Within STUA's strategy, both, the quality of products and the preservation of the environment in our production processes, are a priority.

Over the years STUA has been implicated to the search for environmentally friendly raw materials, processes, products and packaging.

Among many others, we can highlight the following characteristics and actions:

- To design long lasting and good quality products.
- To reduce the consumption of raw materials.
- To use recycling materials.
- To use production systems which are environmentally friendly.

The achievement of these aims will contribute to a real sustainable development.

Our products hold the main European certificates and comply with demanding German standards as regards product resistance and ergonomics. At STUA we also care for people's health.

## ENVIRONMENTALLY FRIENDLY PACKAGING

- In the pursuit of an environmentally friendly packing, STUA is removing all the plastic from this process.
- All STUA cardboard packaging is made with recycled materials and is 100% recyclable because no staples are used in the production.
- Our remaining packaging plastics contain no halogen.

## LOGISTICS MINIMIZING CARBON FOOTPRINT

- STUA choose the eco-friendliest transportation method available.
- We select logistic partners who use environmentally-friendly technologies for their vehicles/engines and are located close to the factory where our products are manufactured in order to reduce the emission release.
- Load Optimization. We try to send a truck only when it is fully loaded.
- Route Optimization. By choosing the best route, it is possible to save fuel and, consequently, reduce the amount of CO<sub>2</sub> emissions.

## RESPONSIBLE MANUFACTURING

- This product is totally manufactured in the European Union.
- The STUA designs are created for a long duration. This helps to make a friendly use of the natural resources. We offer a 2-year guarantee on all the STUA products. STUA guarantees a period of availability of spare parts of 10 years for any product.
- The wood used to manufacture our designs comes from sustainably managed forests registered with the PEFC (Programme for the Endorsement of Forest Certification).
- The MDF material and glues used in the production are formaldehyde free. STUA products use materials that comply with M1 and the California Air Resources Board ACTM 93120.2.
- STUA's fabrics comply with the strict ISO 14001 international environmental regulations regarding its products and its manufacturing processes.
- STUA's upholstery is fire-resistant but avoids the use of harmful retardants like PBB and PBDE.
- The foams used by STUA complies the most exhaustive ecological textile certificate: the OEKO-TEX STANDARD 100. The analyses include prohibited and regulated substances, chemicals considered dangerous to health, and preventive parameters.
- The treatment of metal parts for their subsequent painting, with powder paint or chromed, is the one corresponding to a degreasing and phosphating of the same. No aromatic solvents are used and no diffuse emissions of volatile organic compounds are generated.
- STUA's chrome plating process uses a trivalent chromium bath to replace the highly-toxic hexavalent chromium bath. The trivalent chromium process must produce hard chrome components that perform as well as or better than the older process. Other additional advantages involved in this process:
  - It is not necessary to reduce hexavalent chromium in wastewater.
  - It makes it easier to handle and use the product.
  - No gas emissions are produced.
- The recyclability of the metallic materials used by STUA reaches 97%.
- Our plastic elements are excluded from heavy metals and phthalats in their manufacture, as well as halogenated plastics such as PVC.
- STUA promotes processes with low water consumption. In the last 5 years, we have achieved a 31% saving in drinking water consumption by implementing saving processes.



USE OF WOOD FROM SUSTAINABLY MANAGED FORESTS



ECOLOGICAL UPHOLSTERY WITHOUT PBB & PBDE



FOAMS FIRE RETARDANT & FREE OF TOXIC SUBSTANCES



FORMALDEHYDE FREE PRODUCTS



HEXAVALENT CHROMIUM-FREE FINISHES



PROCESSES WITH LOW WATER CONSUMPTION



RECYCLABLE MATERIALS AND PACKAGING



CERTIFICATED FOR POSTURAL HEALTH