

TECHNICAL SPECIFICATION

Mirallmar mirror

EDUARD SAMSÓ
1991



COMPONENTS AND MATERIALS:

STRUCTURE in plate steel composed of three independent modules joined by screws.

FIXED FLAT DISC, FLAT WITH SIGN and CONCAVE WITH SIGN in sheet steel, with $\varnothing 150 \times 2$ mm.

MIRRORS with flat and concave square form.

NUTS AND BOLTS in white zinc-coated steel.

3M ADHESIVE in strong acrylic.

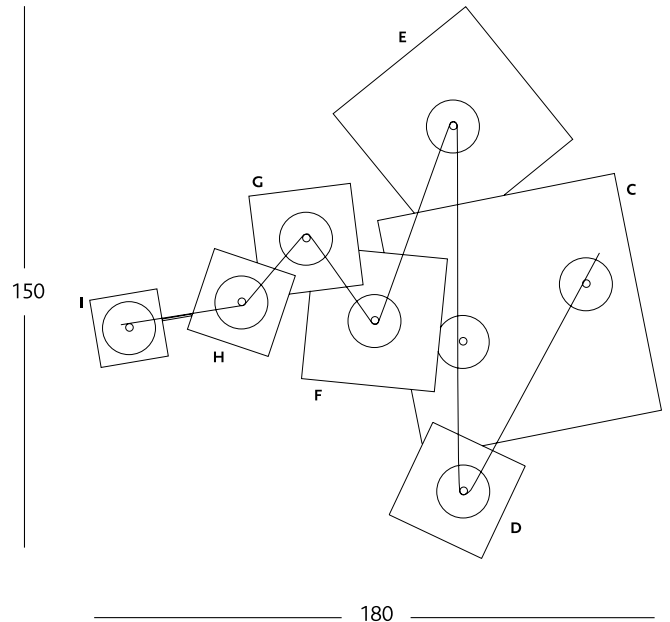
DIMENSIONS AND WEIGHTS:

MIRRORS:

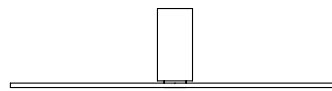
- C MIRROR: 700x700x5mm & 3Kg;
27.5"x27.5"x0.2" (double-sided) & 6.6lbs;
- E MIRROR: 500x500x3mm (double-sided) & 2'2Kg;
20"x20"x0.11" (double-sided) & 4.8lbs;
- F MIRROR: 400x400x3mm (double-sided) & 1'7Kg;
15.7"x15.7"x0.11" (double-sided) & 3.7lbs;
- D-G MIRRORS: 300x300x3mm (double-sided) & 1'3Kg;
11.8"x11.8"x0.11" (double-sided) & 2.9lbs;
- H MIRROR: 250x250x3mm & 0'85Kg;
9.8"x9.8"x0.11" & 1.9lbs ;
- I MIRROR: 200x200x3mm (double-sided) & 0'9Kg.
7.9"x7.9"x0.11"(double-sided) & 1.8 lbs.

MURAL:

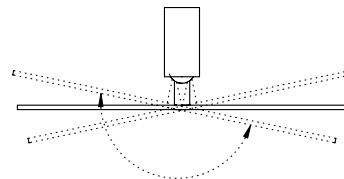
- COMPLETE STRUCTURE: 1800x1500x40mm & 17Kg.
70"x60"x 1.6" & 37lbs.



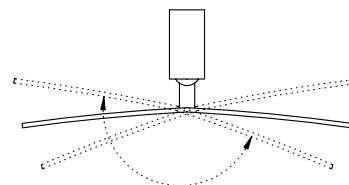
MIRROR WITH FLAT DISC A



MIRROR WITH FLAT DISC B



MIRROR WITH CONCAVE FLAT



FINISHES:

STRUCTURE in 10 micra white zinc-coated steel.

DISCS in 10 micra white zinc-coated sheet steel.

MIRRORS painted on one side in finished silver.

ADHESIVE in polyurethane foam support (open cell), excellent resistance to high temperatures, to solvents and shearing.

PACKAGING:

Inside, the packing set consists of three cardboard boxes properly protected with porex and cellaire sheets. One box contains the flat mirrors, another the concave mirror and the last one has the assembly structures and accessories, protected by bubblewrap.

TESTS:

Resistance to shearing due to traction under loads held from the join between one mirror and the lever arm by a 3M double-sided adhesive tape.

The AIDIMA laboratory certifies that the samples supplied endure a minimum of 72 hours under the following conditions:

Under a 70Kg weight at 23oC.

Under a 40Kg weight at 65oC.

MEASUREMENTS IN CM

UPDATED: 25/06/13
FT-20-CS



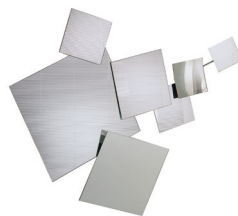
Bd Barcelona design
Ramon Turró, 126 / 08005 Barcelona
Tel +34 93 458 69 09 / Fax +34 93 207 36 97
bd@bdbarcelona.com / www.bdbarcelona.com

Oficina Comercial
Carretera Capellades / km 22,750
Narcís Monturiol, 7 / Pol. Ind Sesrovires
Sant Esteve de Sesrovires / 08635 Barcelona
Tel +34 93 771 30 51 / Fax +34 93 771 32 32
comercial@bdbarcelona.com / www.bdbarcelona.com

FICHA TÉCNICA

Espejo Mirallmar

EDUARD SAMSÓ
1991



COMPONENTS AND MATERIALS:

STRUCTURE in plate steel composed of three independent modules joined by screws.

FIXED FLAT DISC , FLAT WITH SIGN and CONCAVE WITH SIGN in sheet steel, with $\varnothing 150 \times 2$ mm.

MIRRORS with flat and concave square form.

NUTS AND BOLTS in white zinc-coated steel.

3M ADHESIVE in strong acrylic.

DIMENSIONS AND WEIGHTS:

MIRRORS:

C MIRROR: 700x700x5mm & 3Kg;

E MIRROR: 500x500x3mm (double-sided) & 2'2Kg;

F MIRROR: 400x400x3mm (double-sided) & 1'7Kg;

D-G MIRRORS: 300x300x3mm (double-sided) & 1'3Kg;

H MIRROR: 250x250x3mm & 0'85Kg;

I MIRROR: 200x200x3mm (double-sided) & 0'9Kg.

MURAL:

COMPLETE STRUCTURE: 1800x1500x40mm & 17Kg.

FINISHES:

STRUCTURE in 10 micra white zinc-coated steel.

DISCS in 10 micra white zinc-coated sheet steel.

MIRRORS painted on one side in finished silver.

ADHESIVE in polyurethane foam support (open cell), excellent resistance to high temperatures, to solvents and shearing.

PACKAGING:

Inside, the packing set consists of three cardboard boxes properly protected with porex and cellaire sheets. One box contains the flat mirrors, another the concave mirror and the last one has the assembly structures and accessories, protected by bubblewrap.

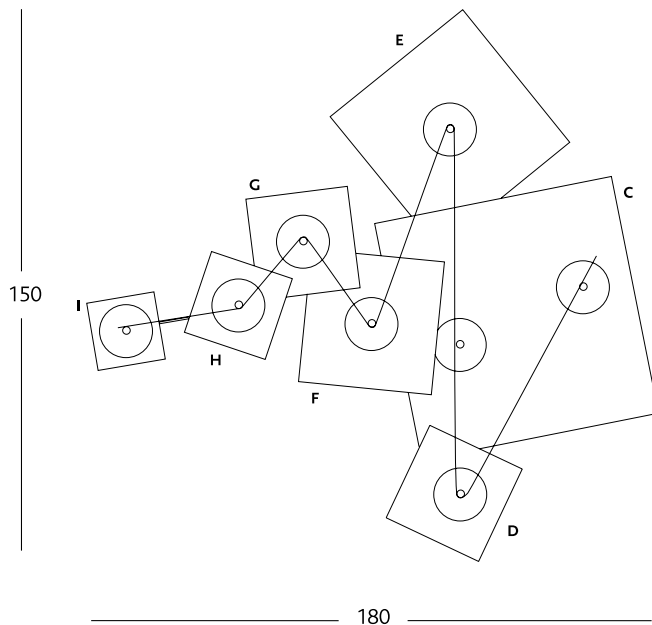
TESTS:

Resistance to shearing due to traction under loads held from the join between one mirror and the lever arm by a 3M double-sided adhesive tape.

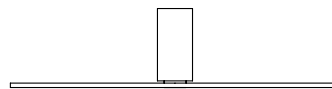
The AIDIMA laboratory certifies that the samples supplied endure a minimum of 72 hours under the following conditions:

Under a 70Kg weight at 23oC.

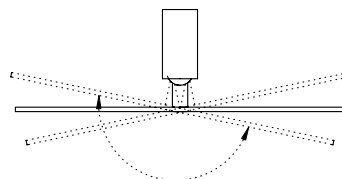
Under a 40Kg weight at 65oC.



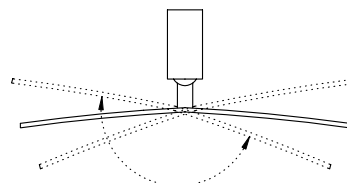
ESPEJO CON DISCO PLANO A



ESPEJO CON DISCO PLANO B



ESPEJO CON DISCO CÓNCAVO



MEDIDAS EN CM



Bd Barcelona design

Ramon Turró, 126 / 08005 Barcelona
Tel +34 93 458 69 09 / Fax +34 93 207 36 97
bd@bdbarcelona.com / www.bdbarcelona.com

Oficina Comercial

Carretera Capellades / km 22,750
Narcís Monturiol, 7 / Pol. Ind Sesrovires
Sant Esteve de Sesrovires / 08635 Barcelona
Tel +34 93 771 30 51 / Fax +34 93 771 32 32
comercial@bdbarcelona.com / www.bdbarcelona.com