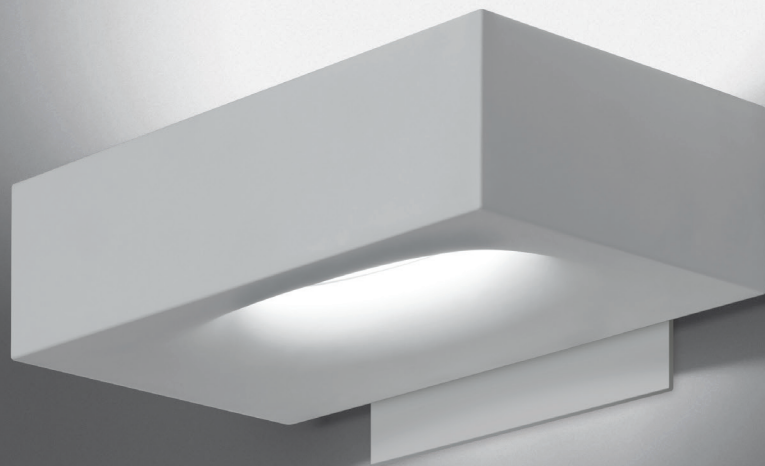


# MELETE



BY  
PIO & TITO TOSO

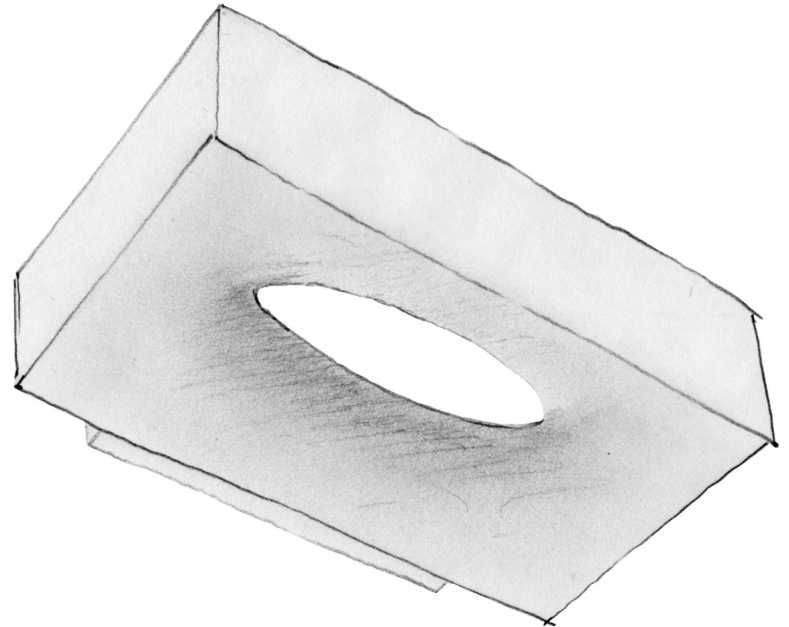




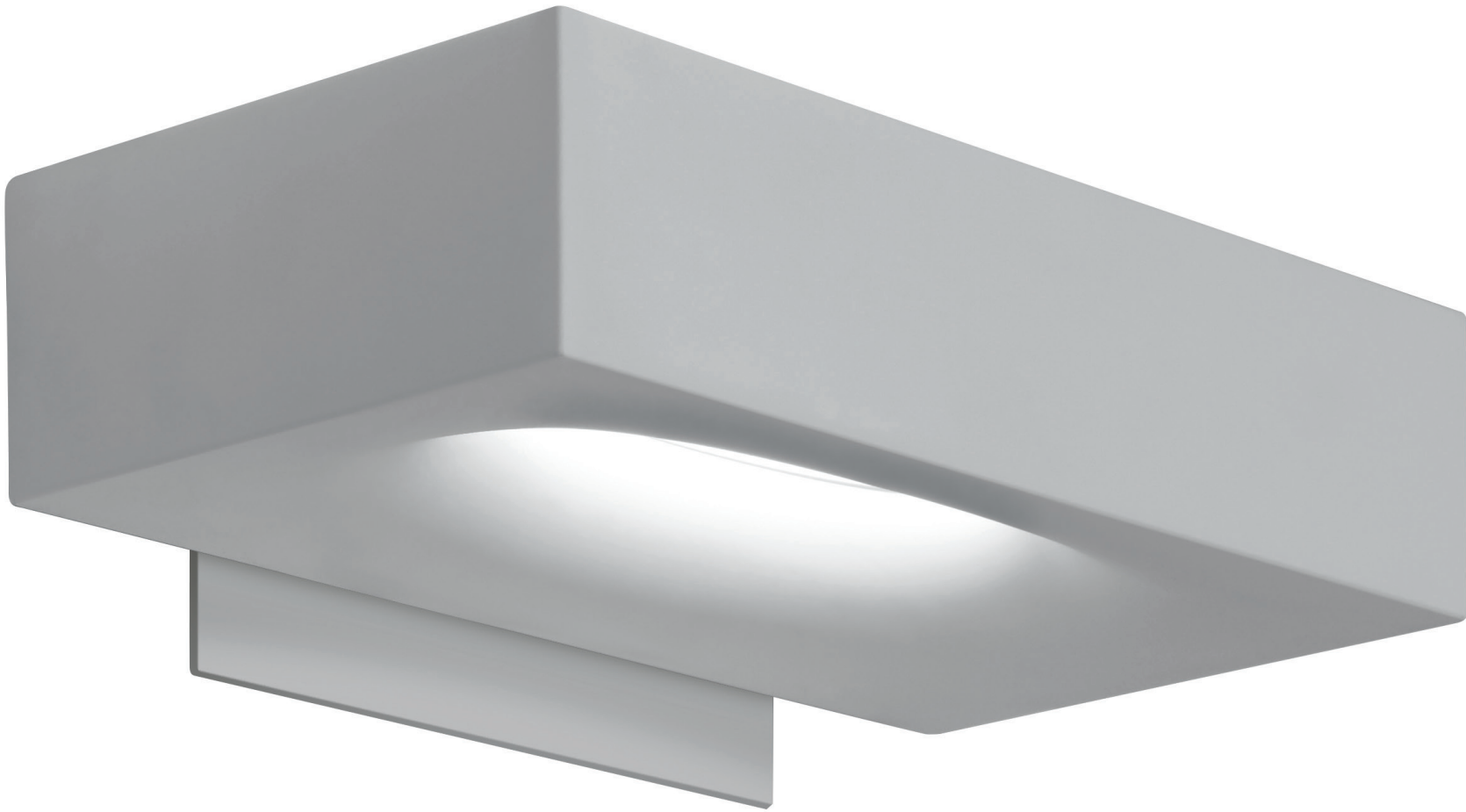
**PIO & TITO TOSO**

---

Italian brothers born in 1973 and 1971 respectively, Pio & Tito Toso love working with light and its endless variations. Their interest in combining both ancient and contemporary techniques of making and finishing glass, combined with cutting-edge energy-performance pushes the boundaries of what can be achieved in fixture design.



*P. & T. Toso*



## MINIMALISM

---

Melete's minimalistic design is bright, white, smooth, and sharp all at once. It is an elegant accent piece that intrigues the eye with its contrasting features of rigidity and softness.



## AMBIANCE

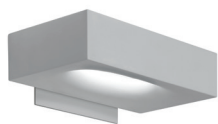
---

Melete's playful structure in die-cast aluminum focuses the majority of indirect light upwards, while its smooth oval center directs a gentle aura of downlight.

# MELETE wall

MELETE LED wall

---



## EMISSION

direct and indirect lighting

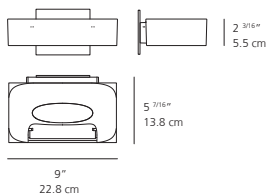
## LIGHT SOURCE

LED  
28W 3000K >90CRI  
or  
28W 2700K >93 CRI

## DIMMING FEATURE

dimnable

## DIMENSIONS

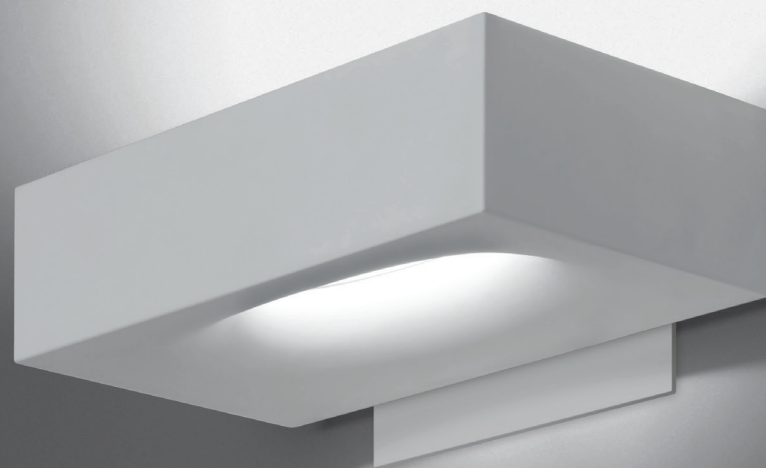


## FINISH

white

## CERTIFICATIONS

c.UL.us listed



*For retail sales contact information, please visit*  
[www.artemide.net/store-locator](http://www.artemide.net/store-locator)



*For contract sales contact information, please visit*  
[www.artemide.net/contract-sales](http://www.artemide.net/contract-sales)