

punt

ART, CRAFT & DESIGN



AMOR CORTESE

TECHNICAL INFORMATION SHEET

AMOR CORTESE

BY MONICA ARMANI, 2016

punt



PRODUCT TYPE

Sofa

Monica Armani designs Amor Cortese as a collection of sofas characterised by the use of wood. The softly shaped upholstered seats offer great comfort within a carefully crafted natural grained wood shell as the protagonist of the piece.

TIPOLOGÍA DE PRODUCTO

Sofá

Monica Armani diseña Amor Cortese como una colección de sofás caracterizada por el uso de la madera. Los asientos tapizados de formas suaves ofrecen un gran confort dentro de una carcasa de madera natural veteada cuidadosamente elaborada como protagonista de la pieza.

DETAILS. DETALLES



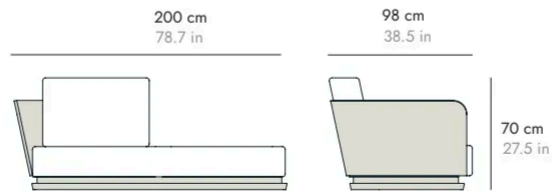
AMOR CORTESE

BY MONICA ARMANI, 2016

punt

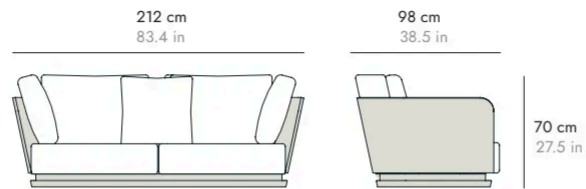
DIMENSIONS DIMENSIONES

ACO201



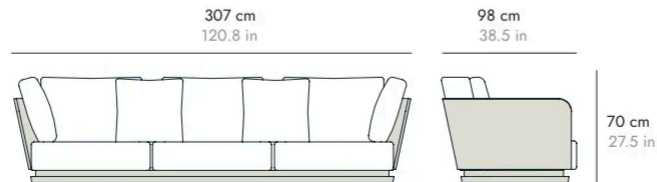
FABRIC (5.5 m x 1.4 m) (216.5" x 55.1")

ACO102



FABRIC (7 m x 1.4 m) (275.5" x 55.1")

ACO103

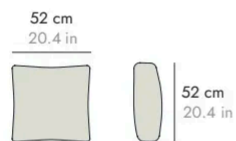


FABRIC (8.1 m x 1.4 m) (318.8" x 55.1")

DIMENSIONS DIMENSIONES

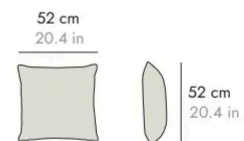
ACO301

MEDIUM SOFT



ACO302

EXTRA SOFT



AMOR CORTESE

BY MONICA ARMANI, 2016

punt

MATERIALS

Wood.

Backrests in oak or walnut plywood.
Legs with adjustable metal feet and base in solid oak or walnut.

Seat.

Seat cushions with expanded polyurethane and polyester fibre fireproof interior (according to English standards).

Cushions.

Auxiliary cushions in washed and sterilised duck and goose feather with 100% hollow and siliconised fibre with anti-dust mite treatment.

MATERIALES

Madera.

Respaldos en madera contrachapada de roble o nogal.
Patas con pies regulables metálicos y zócalo en madera maciza de roble o nogal.

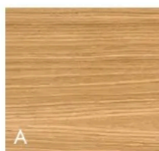
Asiento.

Almohadones de asiento con interior de poliuretano expandido y fibra de poliéster en ignifugo (según normativa inglesa).

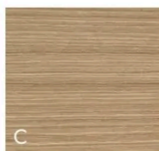
Cojines.

Cojines auxiliares de pluma lavada y esterilizada de pato y oca con fibra hueca y siliconada 100% con tratamiento anti ácaros.

Back & Legs. Respaldo y Zócalo



SUPER MATT OAK
ROBLE SÚPER MATE
CHENE SUPERMATE
SUPER MATT EICHE
ROVERE OPACO



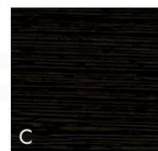
WHITENED OAK
ROBLE BLANQUEADO
CHENE BLANCHI
EICHE WEISS
ROVERE SBIANCATO



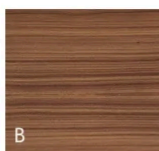
WALNUT STAINED OAK
ROBLE TEÑIDO NOGAL
CHENE TEINTÉ NOYER
EICHE NUSSBAUM
GEBEIZT
ROYERE TINTO NOLE



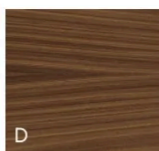
DARK GREY STAINED OAK
ROBLE TEÑIDO GRIS
CHENE TEINTE GRIS
DUNKELGRAU GEBEIZTE
EICHE
ROYERE TINTO GRIGIO SCURO



EBONY STAINED OAK
ROBLE TEÑIDO ÉBANO
CHENE TEINTÉ ÉBÔNE
EICHE GEBEIZT
EBENHOLZ
ROVERE TINTO ÉBANO



SUPER MATT WALNUT
NOGAL SÚPER MATE
NOYER SUPER MATE
SUPERMATT WALNUS
NOCE OPACO

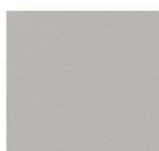


WALNUT STAINED WALNUT
NOGAL TEÑIDO NOGAL
NOYER TEINTÉ NOYER
WALNUS GEBEIZT
WALNUS
NOCE TINTO NOCE



DARK STAINED WALNUT
NOGAL TEÑIDO OSCURO
NOYER TEINTÉ FONCÉ
WALNUS DUNKEL
GEBEIZT
NOCE TINTO SCURO

Fabrics G2



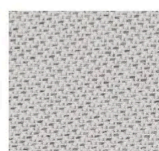
RELATE 101



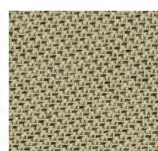
RELATE 201



RELATE 341



TONAL 60122



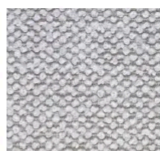
TONAL 61179



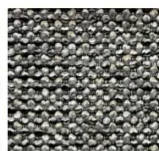
TONAL 64211



CASERTA 04



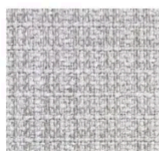
CASERTA 15



CASERTA 19



BACOLI 04



BACOLI 15



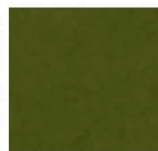
ODDI 09



MATIS 05



MATIS 07



SEVEN 59

AMOR CORTESE

BY MONICA ARMANI, 2016

punt



SEVEN 05

LEINEN 1049

SCHWARZ 9035

Fabrics G3



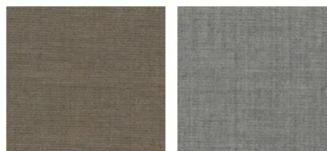
TEMPT 61169

TEMPT 61172

FIELD 232

FIELD 242

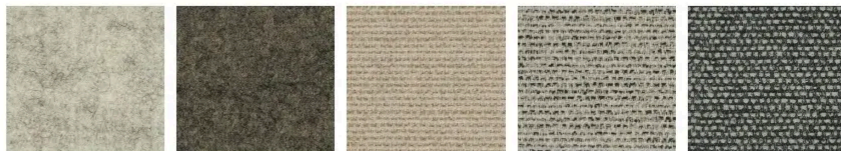
REMUX 223



REMUX 233

REMUX 123

Fabrics G4



FOCUS 60309

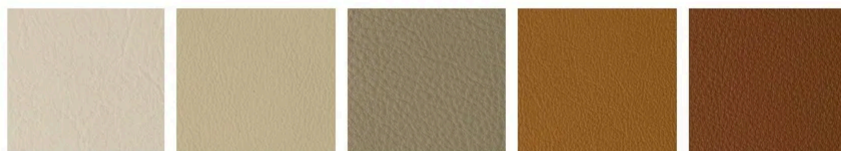
FOCUS 61242

SAVANNA 202

SAVANNA 122

SAVANNA 152

Fabrics G5



LAGUNA IVORY

LAGUNA SAND

LAGUNA STONE

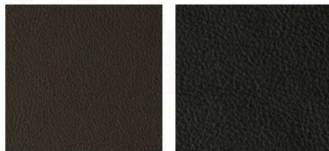
LAGUNA CAMEL

LAGUNA COGNAC

AMOR CORTESE

BY MONICA ARMANI, 2016

punt



LAGUNA BROWN

LAGUNA BLACK