

# BONALDO

## Tab

Designer: **Dondoli and Pocci**

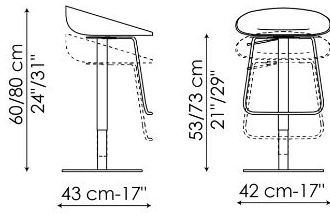


The Tab modern backless bar stool, designed by Dondoli & Pocci, is a functional element that creates an elegant and distinctive trait d'union with an open space kitchen or with the open bar of the living room, but which is also perfect for collective spaces in the contract sphere. Tab's rounded and

soft lines bring to mind the world of nature: the seat is in fact smoothed as if it were a pebble, so as to make the stool, together with the footrest, even more welcoming for a well-deserved moment of relaxation. Tab is available in emery-leather upholstery for a touch of elegance and warmth.



# Data sheet



## Tab

Width: 42cm

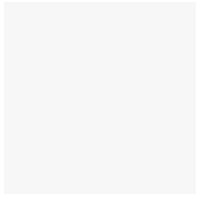
Depth: 43cm

Height: 60-80cm

# Finishes

## SEAT

### Plastic



**Polypropylene**  
Mat white



**Polypropylene**  
Mat anthracite grey



**Polypropylene**  
Mat red

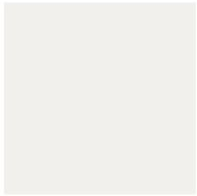


**Polypropylene**  
Mat dove grey

---

## BASE AND FOOTREST

### Metal



**Painted metal**  
Mat white



**Painted metal**  
Supreme anthracite



**Painted metal**  
Mat red

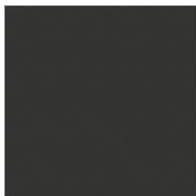


**Painted metal**  
Mat dove grey

### Plus Metal



**Painted metal**  
Mat bronze



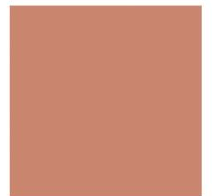
**Painted metal**  
Mat lead



**Painted metal**  
Mat pearl gold



**Painted metal**  
Mat brass



**Painted metal**  
Mat copper

Materials, fabrics, leathers, colors and finishes are approximate and may slightly differ from actual ones. You can find the complete collection of Bonaldo fabrics and leathers on the website <https://www.bonaldo.biz/>

